



GD  
Gold

# Hidden Treasurer Gravel Mining Co.

Some employees of Hidden Treasurer on  
plaza of Hotel Bullion, Bullion, CA. 1903

## Foresthill Divide

On extreme left: Charles L. Akers  
3<sup>rd</sup>, second row, Harold M. Power.  
Superintendent

4<sup>th</sup> on right, sitting, John C. Collins  
Chief Electrician



MILL WE ROAD 101NE

DG  
Blue

Herman Mine Mill

East side of Deadwood Ridge



05  
Blue

Herman Mine Boarding  
House, Shacks, Located  
east side of Deadwood  
Ridge



Hidden Treasures Hotel, Sunny South,  
CA 1892-93. Some employees of Hidden  
Treasures Gravel Mining Company





Day Shift  
Dana Mine, Centerville, Cal. April, 30<sup>th</sup> 1899.

7A  
Gold

Dam Mine, Centerville (Bullion)  
CA. Day Shift 30, 1899



10c  
Gold

Hidden Treasures Mine, Sunny South  
Calif, May 10, 1893, Harold T. Power,  
Sup't, Chinese on day shift



W. E. Banbrock  
ARTIST.

E 4  
Blue

Miners at Bullion, Hidden  
Treasure Mine



E5  
Blue

Miners and Mine Timbers

Sunny South, Hidden Treasure  
Mine





6C

Hidden Treasurer Mine, Sunny South  
CA. Harold T Power Superintendent  
May 10, 1893, Men on day shift.



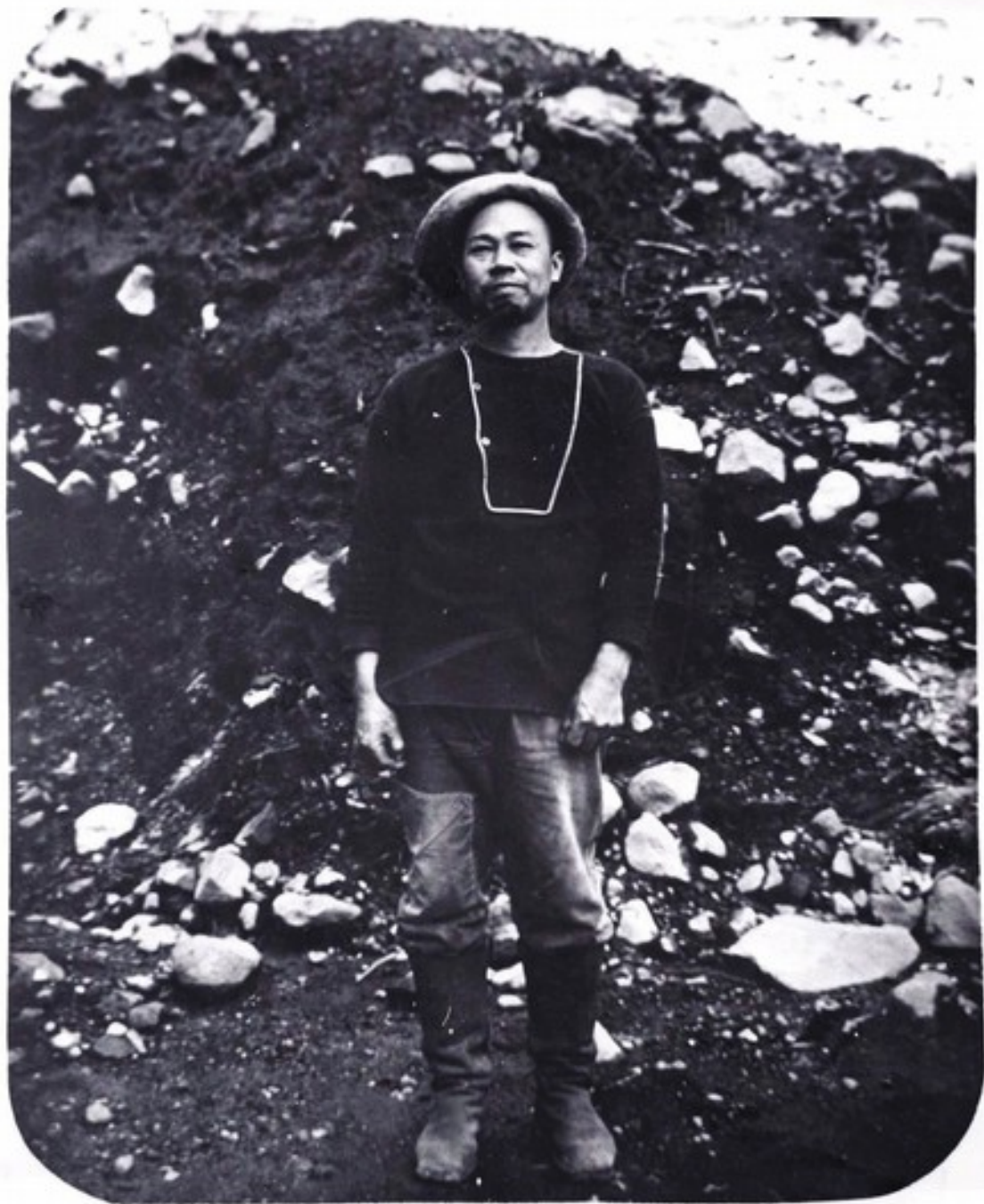
Geo Miller  
Photo

H. Simonds.  
foreman

Plum Elliot.

In Rear:  
Geo. Smiley.

Fred Hodge. Forest J. Bro



10 D  
Gold

Ah Chung Quang,  
Chinese laborer at Hidden  
Treasure Gravel mine, Bullion,  
CA. March 27, 1904



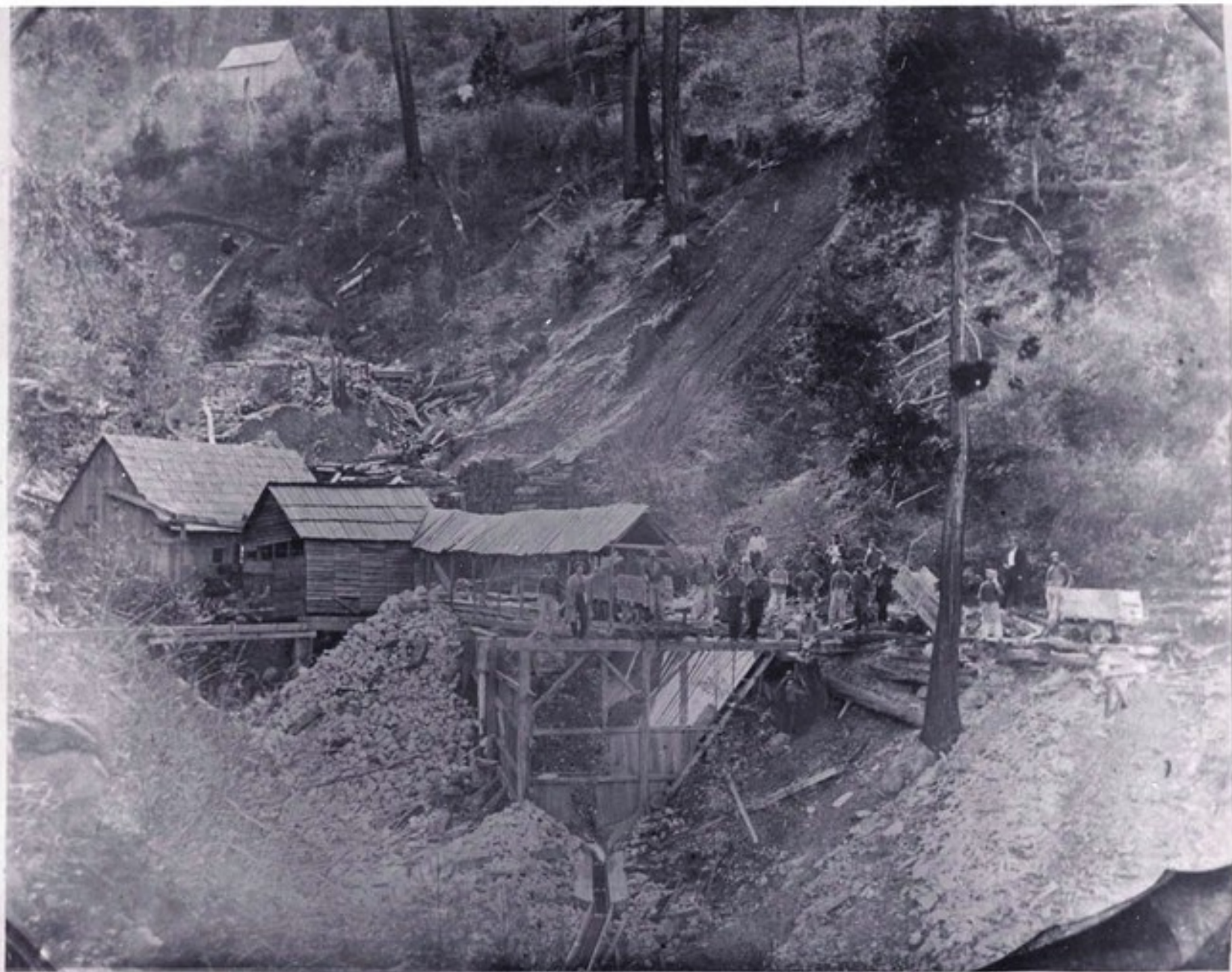
H 4

Chinco in Breast: Hidden Vein, June 1905

7th)

Chinese miner in breast,

Hidden Treasure mine 1905



Mountain Gate Damascus, (Miss. Fresh Hill Switzer)



10A  
Gold

Mountain Gate Mine at Damascus.  
AT head of Humburg Canyon

Red Rock.

\* gravel.



Face of Gravel Deposit. Shocoin formation.

Kiddie Museum Minn 1905

H 8

8th  
Gold

Face of Gravel Breast showing  
formation. Note bedrock below and  
the ancient river bed or gravel channel  
above. This was known as the White  
Channel and ran from Damascus on the  
north end Bullion on the south side  
of F. Hill Divide, Placer Co.



11K  
Gold

150 H.P. D.C. Generator. Interior, generator  
Station plant of Hidden Treasure Gravel  
Mining Co. in West branch of El Dorado  
Canyon below Sunny South, Placer County,  
CA.



*Shett House. Hidden Trees. Man*

4H  
6dd

Shaft House - Hidden Treasure Mine  
1905



99

100



EZ  
Blue

Blacksmith Shop  
Bullion, Hidden Treasure  
mine



99

OCT

E7  
Blue

Tunnel "D" Bullion,  
Hidden Treasure mine  
John Andrew Collins, mine  
electrician and engineer.  
(Father of Mark Collins and  
Ella Collins Shoemaker)



5A

View of Sluice Flume,  
Hidden Treasurer Mine,  
1888, Sunny South, CA,  
Harold T. Power on Flume



*Shett House. Hidden Falls, Minn*

7D

Men on bucket, 2<sup>nd</sup> landing Power  
Shaft, Hidden Treasurer Mine  
Bullion, CA

Daniel Mc hennon, Foreman in  
Charge, on left

Killed in shaft, Nov. 25, age 49 yrs  
7 mos





6H  
Gold

E. Claude Hecker, M.E. Graduate  
U. of CA, working in breast. Hidden  
Treasurer Mine, 1905. (Bullion, CA)  
note the scene complete with lighted  
candle stuck in vertical timber



Electric Train at "Junction," Hidden Pass. Minn. 1914

10H  
Gdd

Electric train at Junction,

Hidden Treasure Mine 1905

64



Yours Truly  
E. Claude Stecker

Face of Breast & Hidden Tunnel Mine

GH  
Gold

E. Claude Hecker, M.E. Graduate U. CAL.,  
working in Breest, Hidden Treasures  
mine 1905 (Bullion, CA) NOTE scene  
complete with lighted candle stuck  
in vertical timber



1A  
6dd

Face of Breast, Hidden Treasures  
mine, Bullion, CA





9D

Dump House and Flume of  
Hidden Treasure Gravel Mining  
Co. at Bullion, Placer Co.  
CA. March 1904



3A  
Gold

Log  
~~Log~~ Dam and Sluice - Hidden  
Treasure Mining Company,  
Blacksmith Ravine, Sunny  
South, CA 1888

Harold T Power

\* Harold M Power

15

71

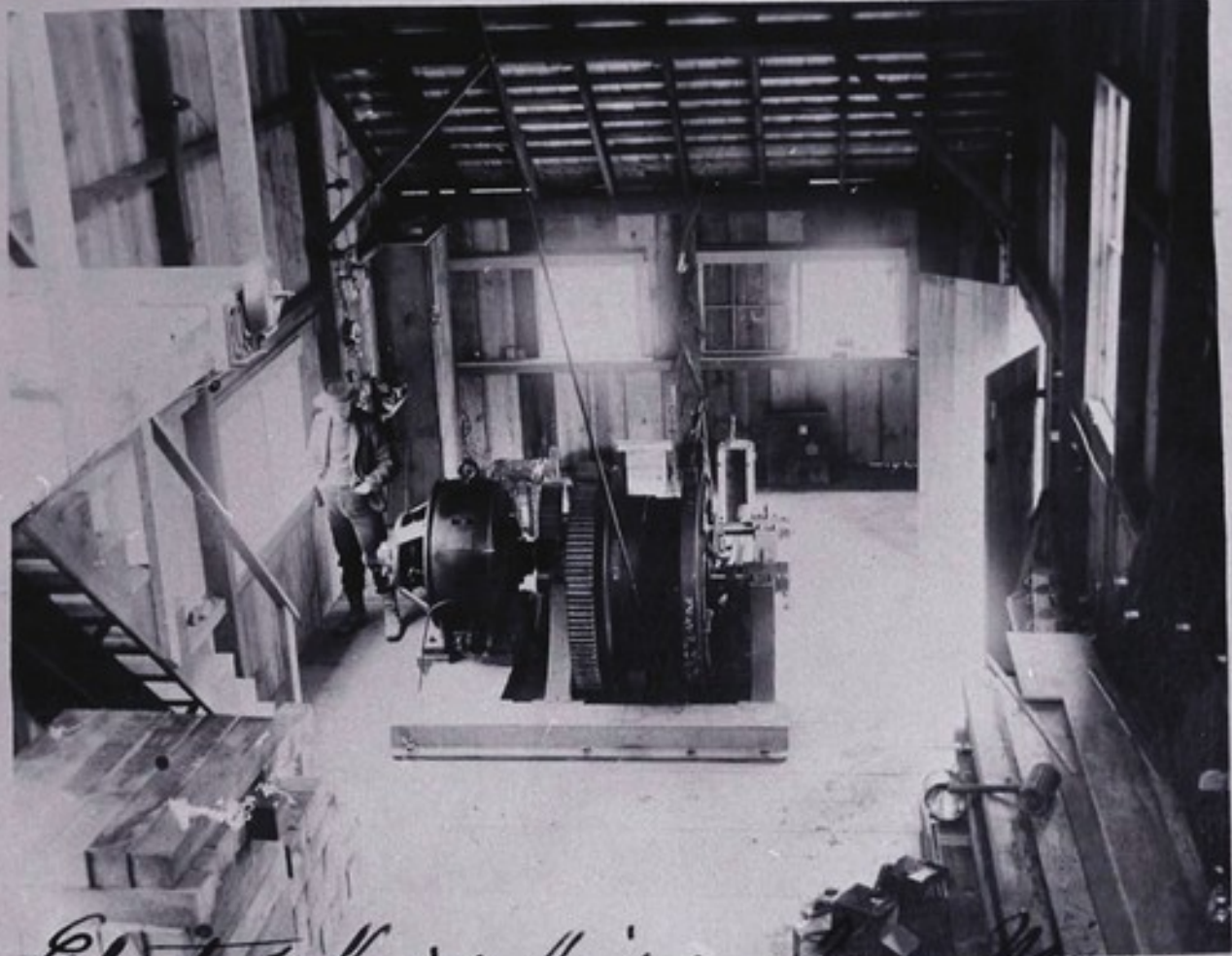


Summer South, Placer Co. Cal., 1905.

IV 13

7I  
Gold

Sunny South 1905



Electric Hoist. Hidden Falls Mill.

51  
Gold

Electric Hoist at Shaft  
Hidden Treasure Gravel Mining  
Co.

10H



Electric Train at "Junction," Hidden Pass Mine, Minn. 1914



104  
gold

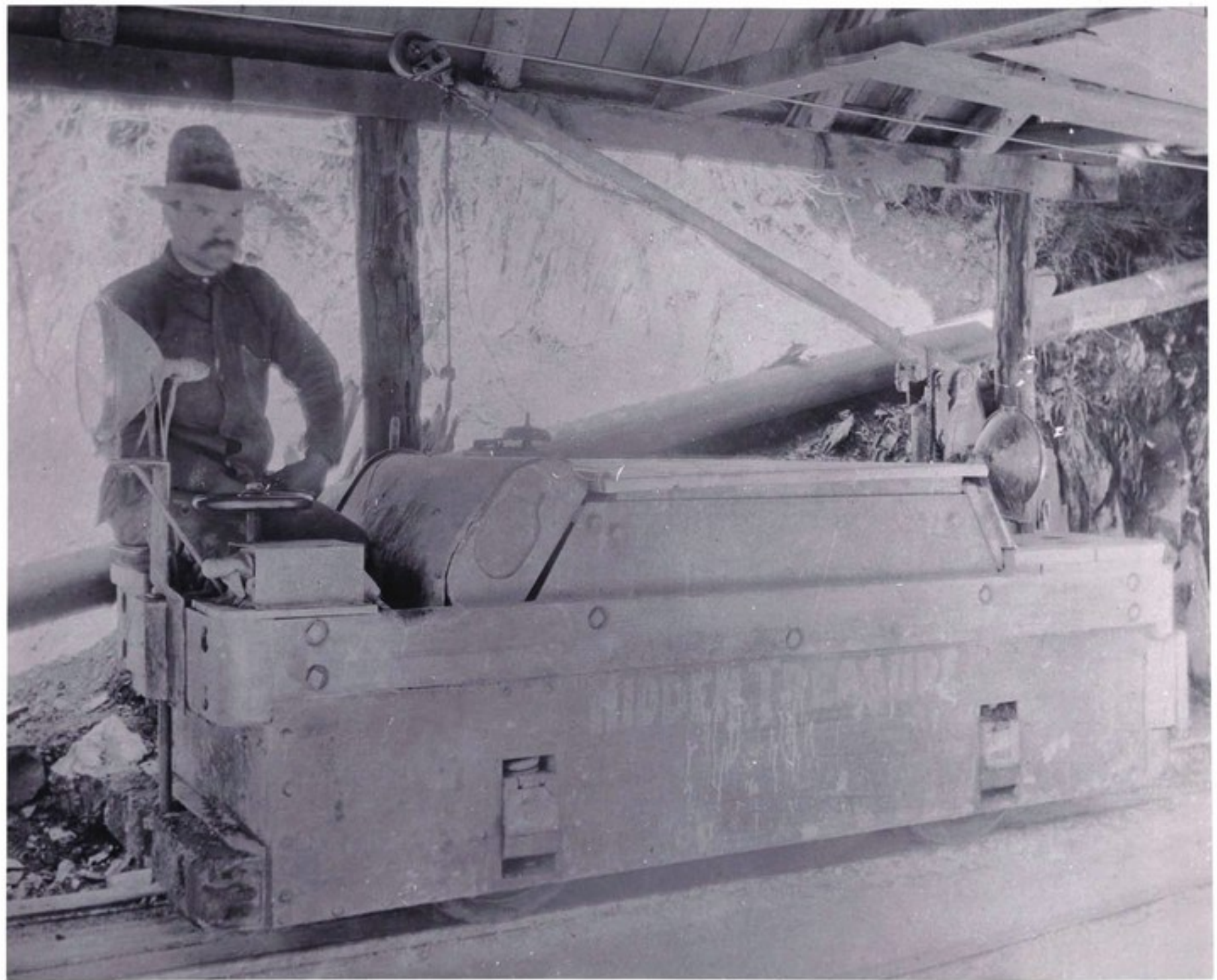
Electric train at junction  
Hidden Treasure mine 1905



Mine's Skilling in Beest. Hidden Street. Mine, 1905.

5H

Miners Drilling in Breast,  
Hidden Treasurer Mine 1905.



12A  
GOLD

Electric Muriel Locomotive, side view,  
Bullion, CA, Hidden Treasures  
Mining Company 1899, John A.  
Collins. Chief Electrician at  
controller



Hidden Lakes Office Bullion Cal.

45  
Gold

Hidden Treasures Office,  
Bullion, CA.



Co. B

Higgins

Air Cyl

No. 2

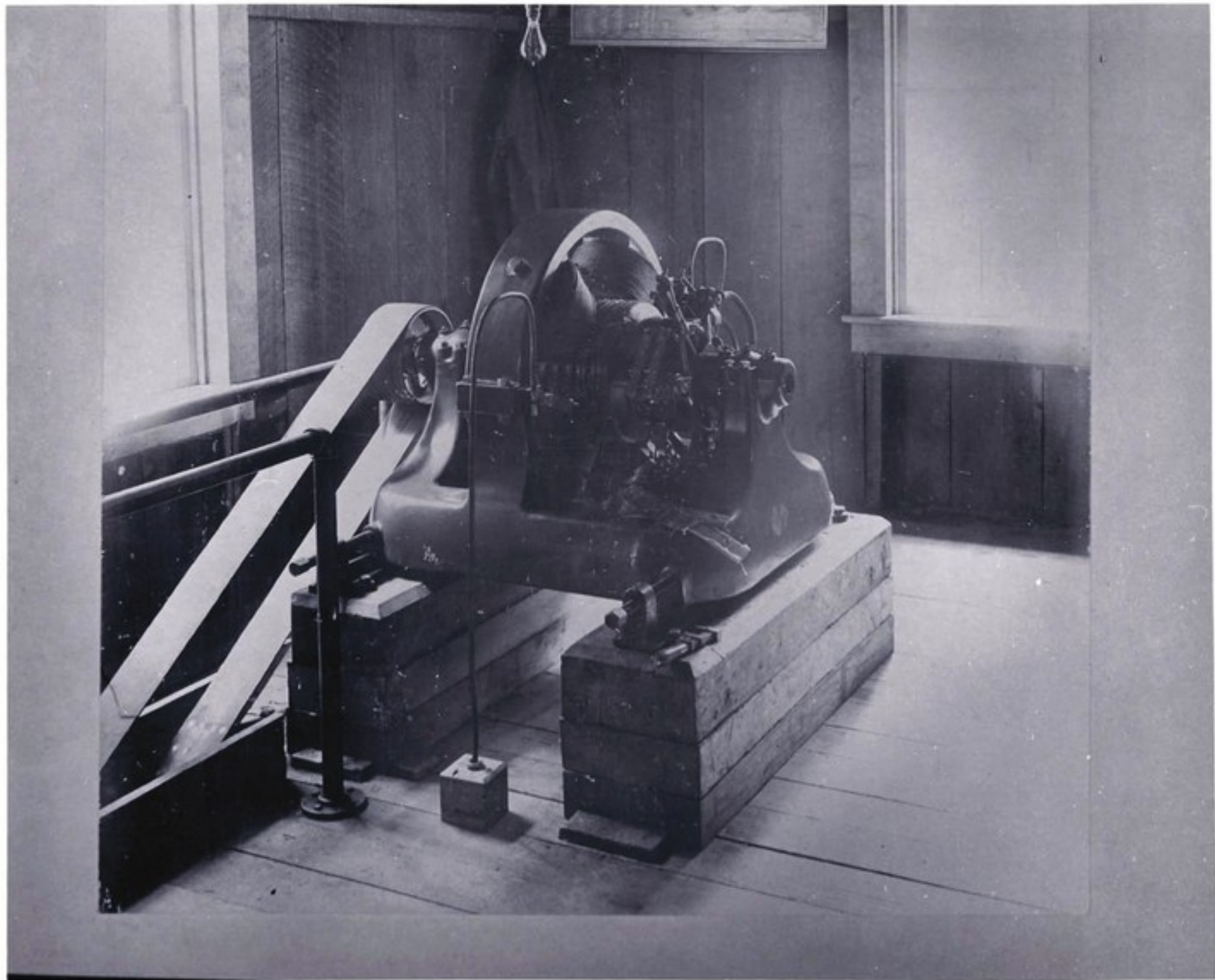
11B





8A  
Gold

No. 2 Water Wheel Charger and Air Chamber  
at Generator Station, Hidden Treasures  
Mining Co., Bullion, CA



9A  
Gold

NO.4 Small Generator or "Booster."



Burnion Cal. 1905

21

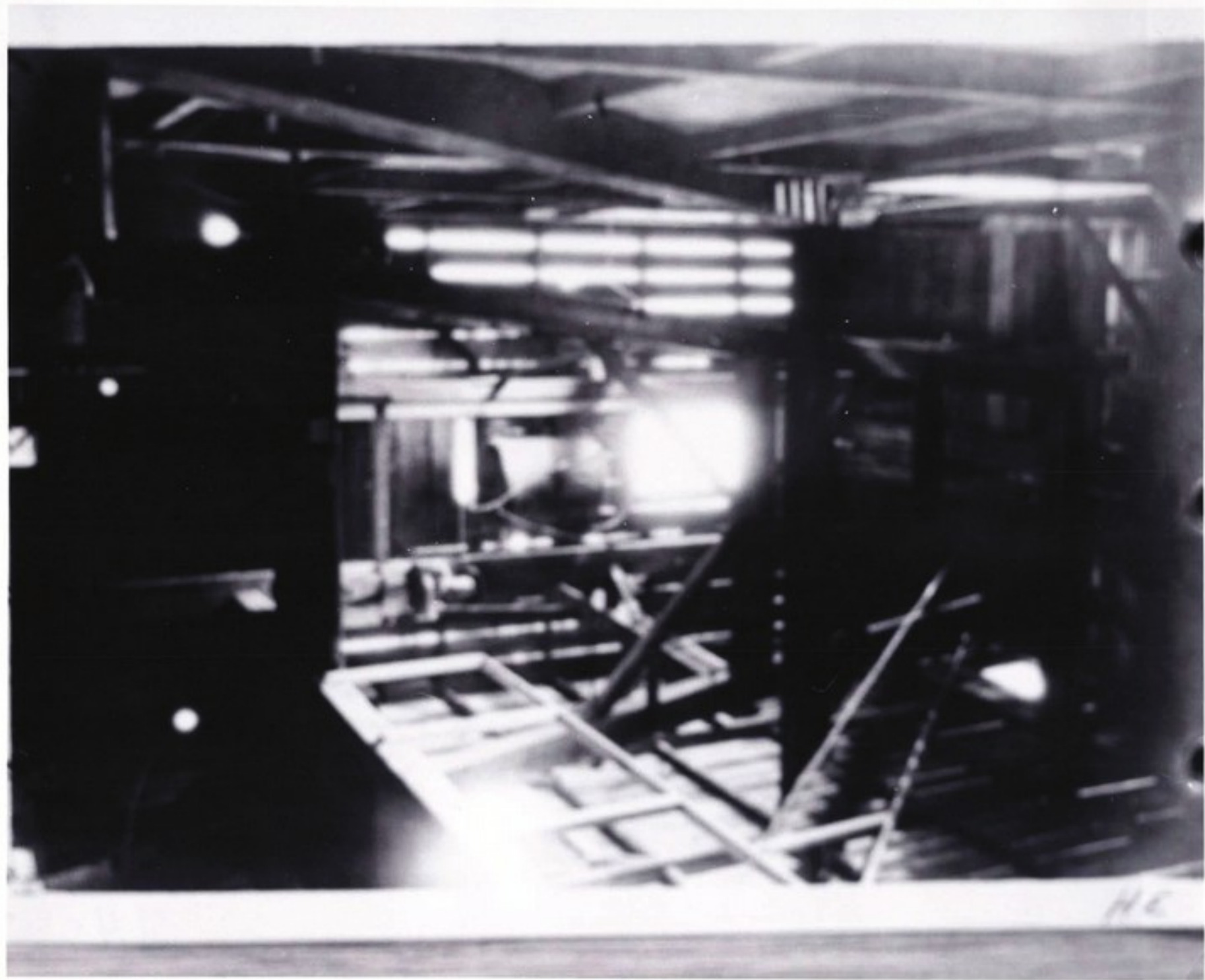
Bullion, CA 1905



G7  
Blue

"Sunny South"  
where the Hidden Treasures mine  
started





3H  
Gold

Interior Shaft House  
Hidden Treasures mine  
Bullion, CA



4A  
Gold

Sunny South, CA 1877

Hidden Treasurer mine  
and employees



2B  
6dd

Span of Horses

Hidden Treasurer Gravel Co.

E. Turnbull, driver

Bullion, CA