





TIMBER

D11  
Blue

Trees on Foresthill Divide

Road complete w/ ruts & roots





IK  
Gold

Largest load of lumber (finished)  
ever brought out from Sugar Pine  
mill.



1 H  
Gold

Logging Truck and Crew  
Sugar Pine Mill  
1906





• 99 • 100



FG  
Blue

Sugar Pine Mill  
Placer County, CA, above Forest Hill  
on the Divide above Big Reservoir



B6  
Blue

Logging with heavy duty Wagon pulled  
by a large team of oxen.





61  
blue

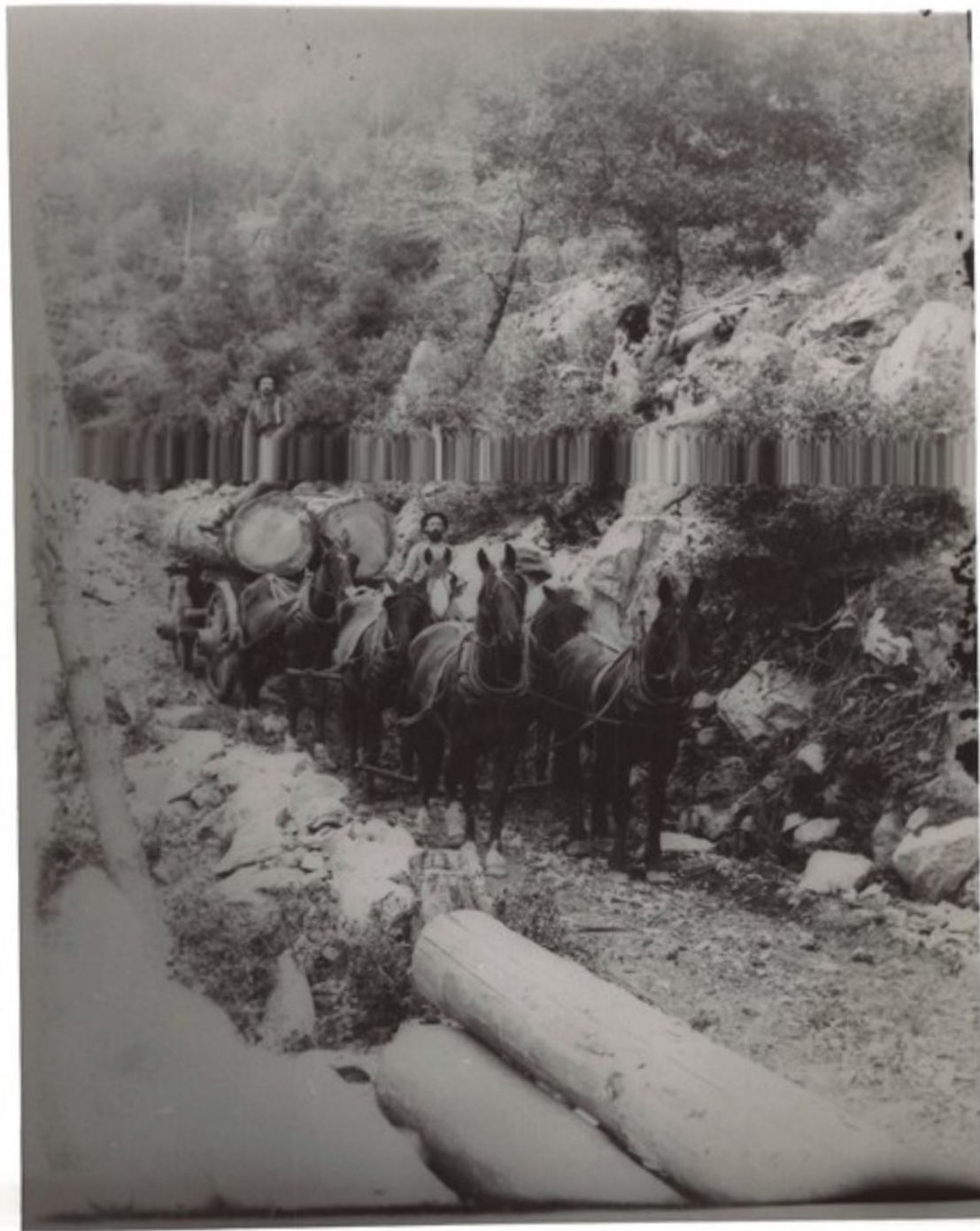
Six ox team and high set of wheels  
used in dragging extra large logs.





F11  
Blue

OLD method used to move hugh logs







B7

Blue

WORKMAN using froes and mallets to  
cleave shakes from cut log sections  
for roofs & siding



6I.  
Gold

Sugar Pine Mine

Forest Hill, Divide,

1906





2A  
Gold

Sugar Pine Mill, Forest Hill Divide  
Placer County, August 1906, Lumber  
Yard and Mill.

Team of Harold T. Power, Thomas B.  
Sands,

Drivers: David Pease, Tail Sawyer:  
Harold M Power, on horseback Henry  
F. Power.





11J



HV  
60d

"Hannas" Duncan and his ox-toggling  
truck at Bart Fanning's Saw Mill  
East Branch of Shirt Tail Canyon, CA.  
8 yoke of oxen attached to truck

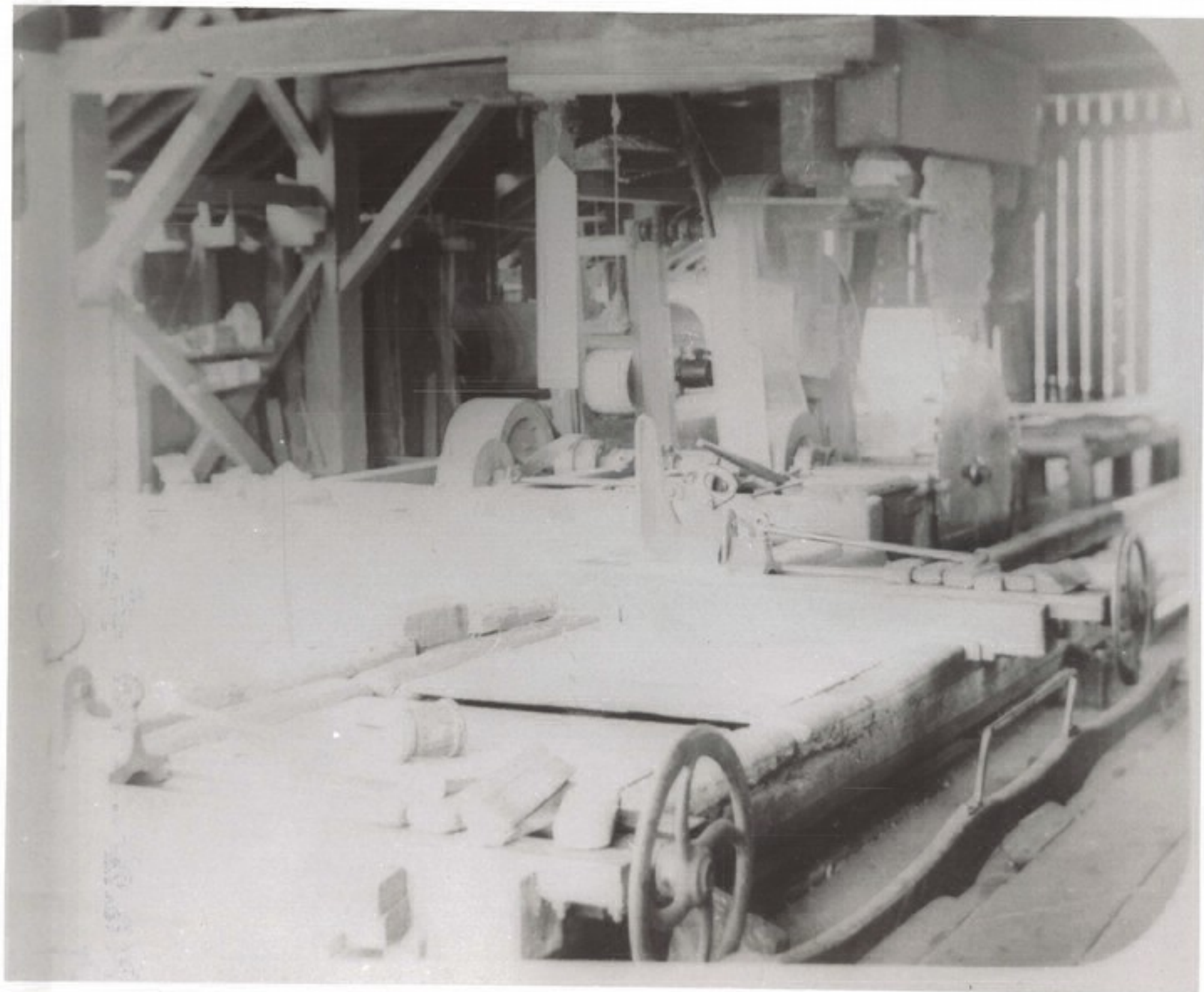


12 B  
Gold

AT Sugar Pine Mill, CA 1906  
Left to Right

V.E. Spencer, Head Sawyer; David Pease Tail Do.;  
Henry F. Power, Teamster; Nimor Harmon,  
Truckman; Chinese Cook, Jew Sing; Harold  
T. Power - man in charge; Thos. Sands,  
Head Teamster, . August 1906





2K  
Gold

Saw mill Interior view  
Sugar Pine Mill, CA.